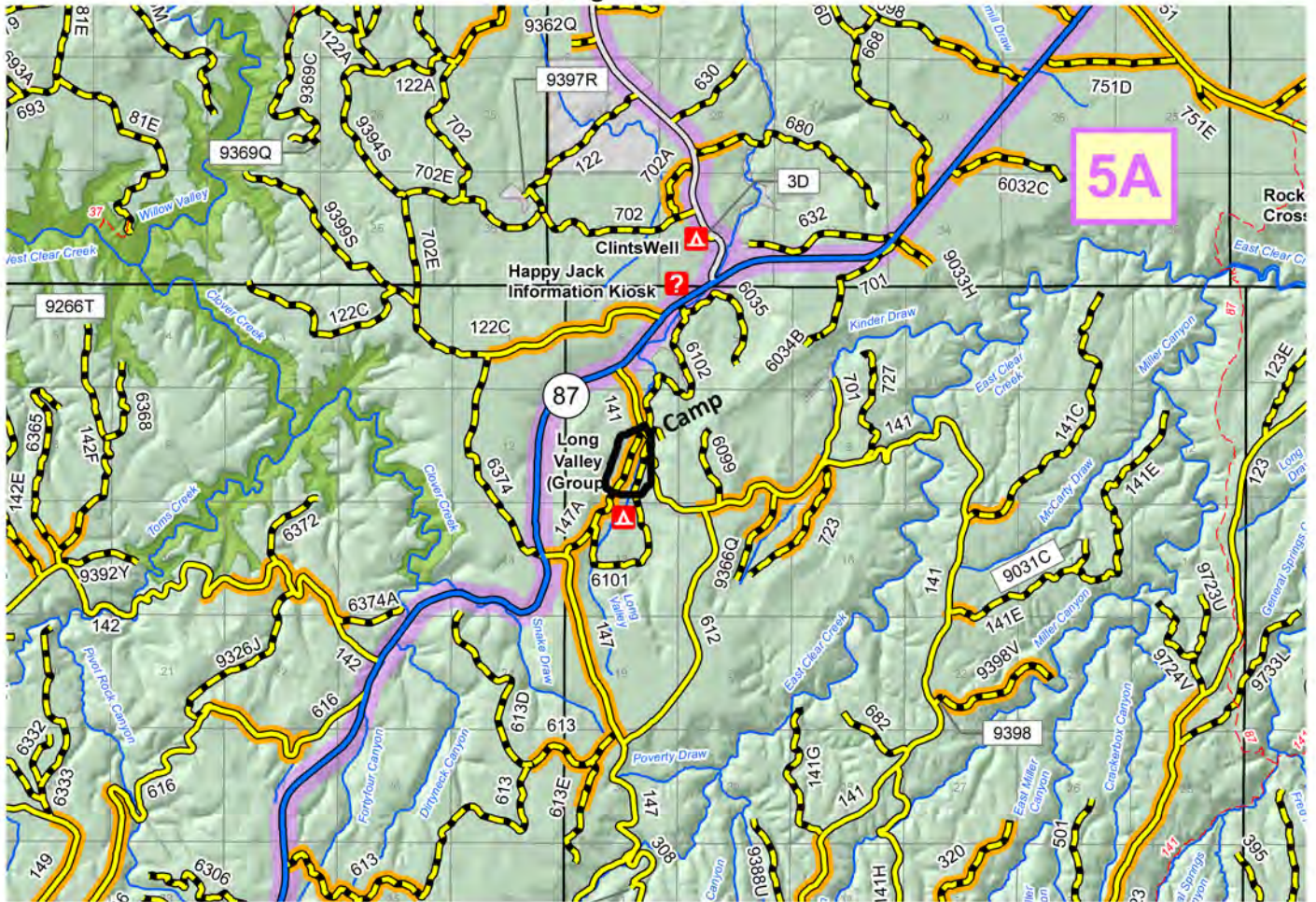


**FH 3
To Flagstaff**



**To Hwy 260 - Camp Verde
or
To Payson**

Directions:

**From PHX take I-17 to Camp Verde, then to HWY 260 E, to Hwy 87 E
From Flagstaff take FH 3 (Morman Lake Rd) S to Hwy 87, take Hwy 87 W
From Mesa (through Payson) take Hwy 87
Just before Clints Well (west of Clints Well and FH 3)
You will see FR 141, turn south on FR 141, go about 1/2 Mi S to FR 147A
There will be signs to direct you to the main camping area.
DO NOT CAMP AT THE WORK CENTER! Our camp is before there.**